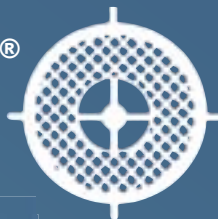


ME9500

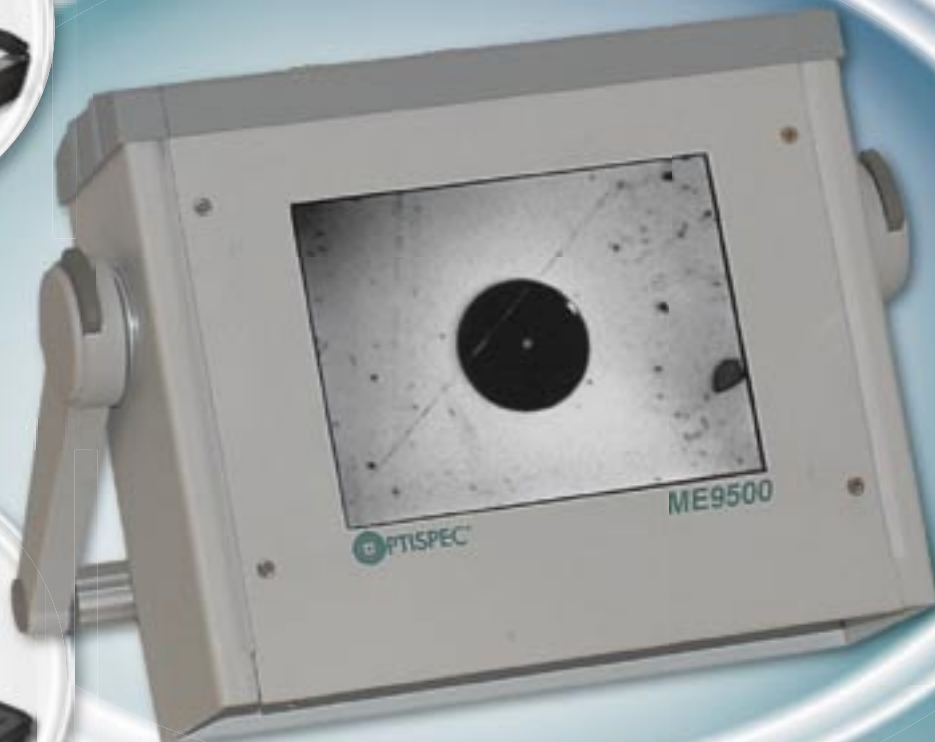
Portable LCD Display

OPTISPEC®



www.microenterprises.net

*Shown with ME9100
Video Microscope*



*Shown with optional
crush-proof case*

*Side buttons lock handle
into position*



Features:

- Built-in battery charger
- Video Input / Output
- 6.4" Color TFT LCD Display
- Dedicated Input for ME9100 videoscope
- Adjustable handle tilts to become a stand



*Handle folds into a
built-in stand*

ME9500

Portable Display

Micro Enterprises Inc

Description

Manufactured by Micro Enterprises Inc., the ME9500 is a portable LCD display with built-in battery pack and charger. Designed for industrial microscopy, its combination of portability and durability make it perfect for the production floor or field use.

The durable handle adjusts to become a built-in stand and allows the monitor to tilt for several ergonomic viewing angles. The internal battery pack and charger provide enough power for the LCD display and even an Optispec® ME9100 series bulkhead inspection scope. The sturdy, all metal chassis and cost effective design make the ME9500 the perfect tool inside or outside any production facility.

Options

- **ME 9100 Series Microscope**
Hand-held microscopes designed for inspecting "behind the wall" / bulkhead connectors. Available in high (ME9100) and low (ME9300) magnifications.
- **MP38025 Carry Case:**
Water-tight, crush-proof carry case
- **MP19184 Replacement Battery:**
NiMH Re-chargeable battery pack

Specifications

- **Video:**
6.4" TFT Color LCD Display
960 x 234 pixels
Available in NTSC/EIA and CCIR/PAL
1 ME9100 (RJ-45) Input
1 Video Input
1 Video Output
- **Magnification with Optispec ME9100:**
with ME9100: 335x
With ME9300: 128x
- **Power Requirements:**
110-220V 50/60Hz internal power supply
24v DC charger
Internal NiMH Battery Pack
5 hours of continuous operation
1 hour quick charger
8-10 hour trickle charge
- **Dimensions:**
ME9500 Dimensions:
Length 11" (27.9cm)
Width 3.75" (9.5cm)
Height 10.5" (26.7cm)
Weight 5 lbs. (2.26 kg)
Carry Case Dimensions:
Length 18.5" (47.0cm)
Width 7.5" (19.1cm)
Height 14" (35.6cm)

Shown with MP38025 Carry Case and ME9100 Series Microscope.



Press the side buttons to adjust the handle into a stand.



The highly portable ME9500 is equipped with an internal battery.



www.microenterprises.net

Distributed by:

Order information can be provided by calling (770)447-4077 or by contacting us by e-mail at sales@microenterprises.net
Warranty period 1 year from date of purchase to include parts and labor. Shipping costs are not included.

MICRO ENTERPRISES INC.

(770)447-4077 Fax:(770)446-5585
6025 Unity Drive Suite D Norcross, GA 30071
E-mail: sales@microenterprises.net

© 2-28-2003, Micro Enterprises Inc. OPTISPEC is a registered trademark of Micro Enterprises Inc. All rights reserved. Specifications and Information are subject to change without any obligation on the part of the manufacturer.

For the latest information, visit the Micro Enterprises' Web Site at www.microenterprises.net
Printed in USA Doc# 95009600-BH Rev -